



Accessories



C209 TRASH BARREL HOLDER

Installation NB & PC Series

Contents:

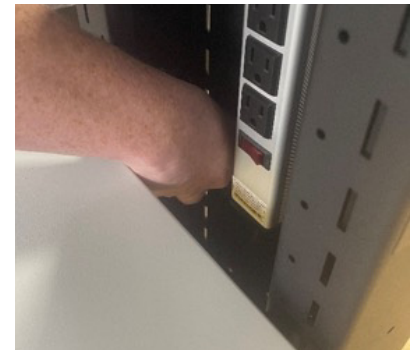
- Metal barrel holder
- (2) screws
- (2) nuts
- (1) Allen wrench
- Green trash barrel



1. Place screws in holes on side or rear of vertical mast as shown. (This example is attaching the holder to the side of mast.)



2. Place your thumb on the top screw to hold in place (as shown).



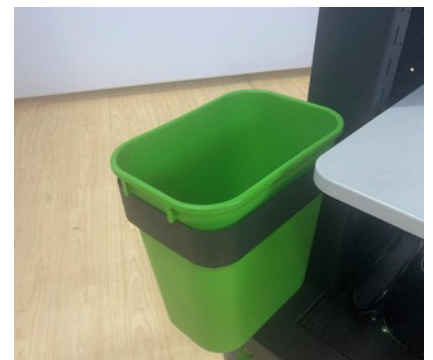
3. Use nut to secure screw from inside mast with other hand (as shown).



4. Repeat for second screw.



5. Tighten screws with Allen wrench as shown below.



6. Place trash barrel in holder.

C209 TRASH BARREL HOLDER

Installation EC & QC Series

Contents:

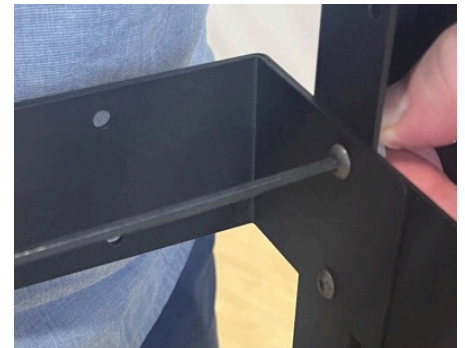
Metal barrel holder
(2) screws
(2) nuts
(1) Allen wrench
Green trash barrel



1. Place screws in holes on side of EC/QC frame as shown.



2. Place your thumb on the screws to hold in place and use nuts to secure each screw with other hand (as shown).



3. Tighten screws with Allen wrench as shown above.



4. Place trash barrel in holder.

B107 KEYBOARD DRAWER FOR NB/PC SERIES

Installation for PC Series:

1. Underneath the top shelf, line up the bracket holes with the existing holes of the top shelf. (Older model shelves may need holes drilled.)
2. Attach (4) 10/32 screws/nuts provided and tighten with 1/8" hex key.

Installation for NB Series:

1. Remove the top shelf and flip over. Line up with pilot holes on the shelf.
2. Attach with 4 screws provided.



B108 KEYBOARD DRAWER FOR NB SLIM/APEX SLIM

Installation

1. Remove the top shelf and flip over. Line up with pilot holes on the shelf.
2. Attach with 4 screws provided.



B109 ADJUSTABLE PC TOWER HOLDER FOR NB/PC SERIES

Installation

1. Before you attach the CPU holder to the back of the center mast, adjust the straps and the width of the CPU holder to fit your desktop computer.
2. Attach the CPU holder to the mast with 3 bolts provided.
3. Place the CPU into the CPU holder and secure with the straps.



B112 LAPTOP/TABLET HOLDER

Installation

1. Remove the ball mount base from the arm and place the base on the surface of the workstation at the desired location.
2. Attach the base to the surface using the provided hardware.
3. Reattach the arm with tablet holder to the ball mount base.



B114 LAPTOP SECURITY BRACKET FOR NB/AP SERIES

Installation

1. Place the bracket on the work surface in the desired location and secure with 3 screws.



B122 DOCUMENT HOLDER FOR NB/PC SERIES

Installation

1. Align and attach the binder holder to the desired position in the back of the center mast.



B122 ADD BINDER HOLDER FOR NB/PC SERIES (REQUIRES B122)

Installation

1. Align and attach the additional pocket to the B122 and secure with supplied hardware.



B128 LOCKABLE DRAWER FOR NB/PC SERIES

Installation

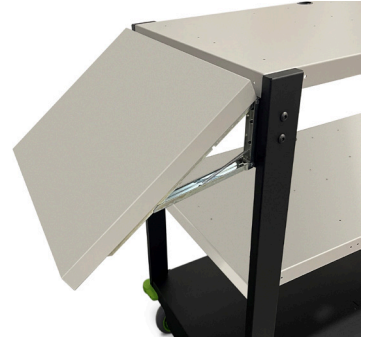
1. Pre-assembled drawer; just attach in the desired position on the front or back of the center mast.



B130 FOLDING SHELF FOR PC SERIES

Installation

1. Attach shelf to front posts of cart (as shown) using the screws and nuts supplied.



B131 SLIDE OUT PRINTER SHELF FOR NB/PC/EC SERIES

Installation

1. Extend the sliding shelf slides to expose the mount holes of the bracket.
2. Place and align the slide out brackets to the pre-drilled matching holes on the shelf.
3. Use the 4 screws (10/32 x 1/2) and nuts to secure the slide-out printer shelf.



B132 SCANNER HOLDER

Installation

1. For NB/AP Series, attach with 3 screws supplied.
2. For PC/EC/QC Series, attach with 3 screws and nuts supplied using the predrilled holes.

Unit is attached from under the top shelf (as shown).



B137 DESK ORGANIZER FOR NB/PC SERIES

Installation

1. Place the desk organizer to the desired position.
2. Attach desk organizer with screws supplied.



B141 LABEL HOLDER FOR NB SERIES

(Not compatible with keyboard drawer for NB Series)

Installation

1. Attach 16" pipe to brackets using the 2 threaded knobs supplied.
2. Attach the assembly to the bottom of the shelf with the screws supplied.



B146 SMALL 10" X 8" PRINTER SHELF FOR NB/PC/QC/EC SERIES

Installation for NB & PC Series

1. Fasten the bracket to the top of the cart mast with nuts and screws supplied.
2. Fasten the tray to the side of the bracket with nuts and screws supplied.

Installation for EC & QC Series

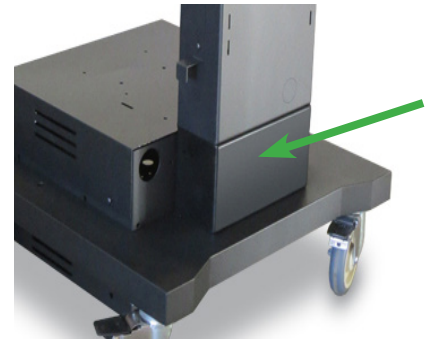
1. Fasten the bracket to the far-right corner of the top shelf with nuts and screws supplied.
2. Fasten the tray to the side of the bracket with nuts and screws supplied.



B150 MAST EXTENSION 5.5" FOR NB/PC SERIES

Installation

1. Attach mast extension to the base and tighten with nuts supplied.
2. Attach mast to top of mast extension with nuts supplied.



B266 SINGLE POST MONITOR HOLDER

Installation

Installation directions on packaging

[Link to directions here.](#)



B267 DUAL POST MOUNT SIDE-BY-SIDE MONITOR HOLDER

Installation

Installation directions on packaging

[Link to directions here.](#)



B268 DUAL POST MOUNT STACKED MONITOR HOLDER

Installation

Installation directions on packaging

[Link to directions here.](#)



B269 THIN CLIENT HOLDER (REQUIRES B266, B267, OR B268)

Installation

Installation directions in box

[Link to directions here.](#)



B311 AP1000 HANGING PRINTER SHELF

(Not compatible with B107 keyboard drawer)

Installation

1. Attach (as shown) using the provided hardware.



B407 EC/QC SERIES KEYBOARD TRAY

Installation

1. Place keyboard tray under the top shelf (as shown).
2. Secure with provided hardware.



B430 EC/QC SERIES FOLDING SHELF EXTENSION

Installation

1. Unfold bracket and hold in place as shown in photo.
2. Attach shelf to side posts of cart using the screws & nuts supplied.



QUICK START GUIDE



34 South Hunt Rd.
Amesbury, MA 01913 / USA
+1.781.935.3450
www.newcastlesys.com



**SAVE STEPS.
INCREASE PRODUCTIVITY.™**