



## EC Series

---



LEARN MORE AT  
[NEWCASTLESYS.COM/EC SERIES](http://NEWCASTLESYS.COM/EC SERIES)



SAVE STEPS.  
INCREASE PRODUCTIVITY.™

# EC Series

## Assembly Manual

Document Number: EC380\_00\_A  
Revision Date: April, 2024

Release Date: April, 2024

## COPYRIGHT

All copyrights to this document are owned by Newcastle Systems, Inc. No part of the contents of this document may be reproduced or transmitted in any form or by any means without the prior written consent of Newcastle Systems, Inc.

## NOTICE

Newcastle Systems, Inc. shall not be liable for errors contained herein. Newcastle Systems, Inc. shall not be liable for any damages whatsoever, including, without limitation, damages for loss of business profits, business interruption, loss of business information, or other pecuniary loss arising out of the use of this documentation even if Newcastle Systems, Inc. has been made aware of the possibility of such damages.

Information contained in this document is subject to change without notice. While every effort is made to ensure that the information is accurate as of the publication date, users are reminded to update their use of this document with documents published by Newcastle Systems, Inc. subsequent to this date. Updates may be available at [www.newcastlesys.com](http://www.newcastlesys.com) or by contacting Newcastle Systems, Inc.

Copyright © 2024 by Newcastle Systems, Inc.  
ALL RIGHTS RESERVED  
Printed in U.S.A.

Newcastle Systems, Inc.  
34 South Hunt Road  
Amesbury, MA 01913 USA  
(781) 935-3450  
[www.newcastlesys.com](http://www.newcastlesys.com)

# Table of Contents

## About This Manual

Symbols and Conventions .....	v
Newcastle Systems Technical Support .....	v

## The EC Series

Standard Contents.....	1
Optional Accessories .....	1
Tools Required .....	1
Setting up the EC Series .....	2
Tips for Proper Cart Operation.....	6

## Index

## About This Manual

### Symbols and Conventions

Symbols are used in this manual and on the product itself to ensure correct usage, to prevent danger to the user and others and to prevent property damage. The symbols are defined below. It is important that you read these descriptions and fully understand them.



#### Caution

This symbol indicates information that, if ignored, could result in personal injury or harm to the equipment due to incorrect handling.



#### Warning

This symbol indicates information that, if ignored, could result in death, serious physical injury or destruction of property due to incorrect handling.



Indicates important procedures

**Note:** Indicates important related information, reminders and recommendations

*Italics* Used for emphasis, for indicating the first occurrence of a new term and for book titles

1. Numbered list - Used when the order of the items is important

- Bulleted list - Used when items are of equal importance, but the order is unimportant

## Newcastle Systems Technical Support

You can reach Technical Support by telephone. Dial (781) 935-3450, then select 4 for technical support.

When requesting assistance, please be ready to provide the following information:

- Your name and telephone number
- Product model and serial number
- Brief description of the problem and list of symptoms
- Steps you have already taken to try to resolve the problem

#### If the Product is Damaged

If any portion of the unit is damaged, forward an immediate request to the delivering carrier to perform an inspection of the product and to prepare a damage report. Save the container and all packing materials until the contents are verified.

Also report the damage, along with the model and serial numbers, to Newcastle Systems Customer Service at (781) 935-3450 so that action can be initiated to either repair or replace the damaged items. Do not return any items to Newcastle Systems until you obtain instructions from Customer Service.

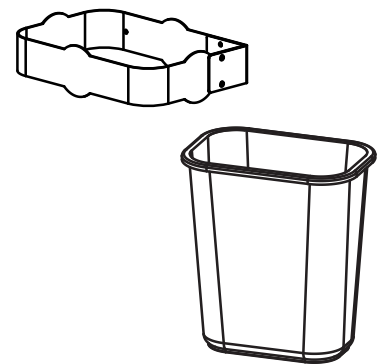
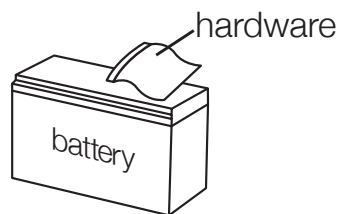
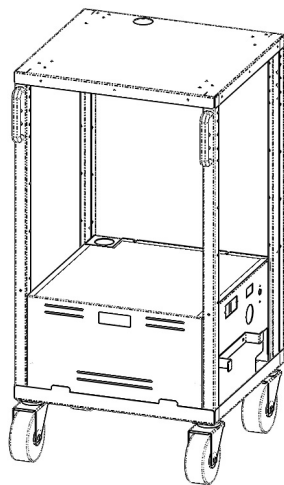
Upon receipt of this information, Newcastle Systems will provide service instructions, or a return authorization number and shipping information.

## The EC Series

### Standard Contents

Each cart will come with the following standard contents:

- Cart (assembled)
- Battery and hardware
- Trash can holder and green can



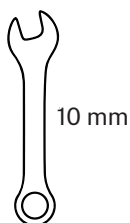
### Optional Accessories

Any optional accessories that were ordered with the cart will either be installed on the cart or shipped separately in a box with the cart.

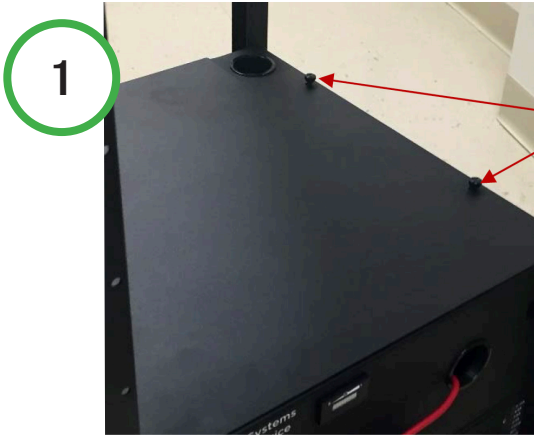
**Note:** Some accessories may be placed in the power cabinet for shipping purposes.

### Tools Required

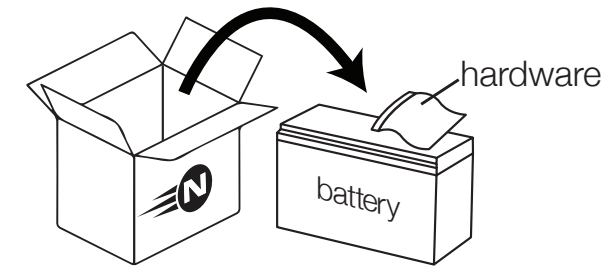
One 10 mm wrench



## Setting up the EC Series



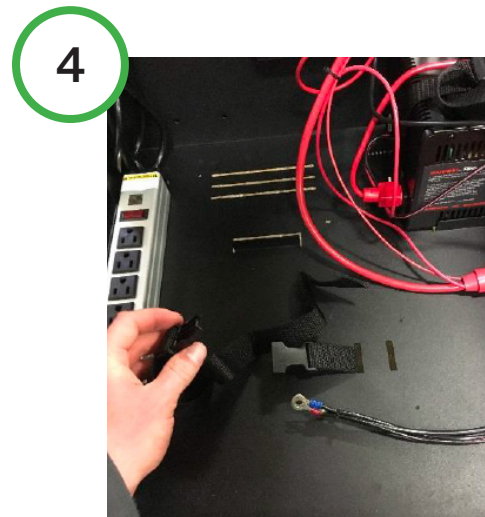
Open the power cabinet by loosening the (4) thumbscrews.



Remove battery & hardware (includes (2) bolts, (2) flat washers and (2) lock washers) from cardboard box.

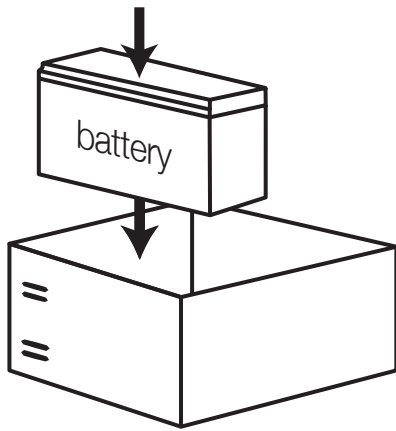


Next, remove the power cabinet cover.



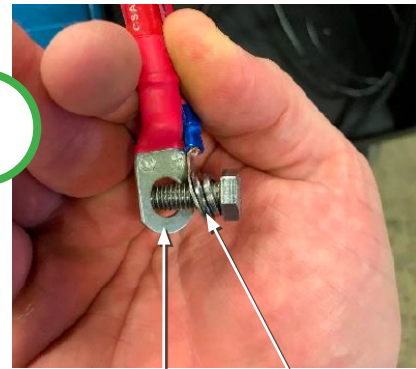
Unclip nylon battery strap & open to allow placement of battery

5



Carefully lift battery by its handles & place in cabinet

7

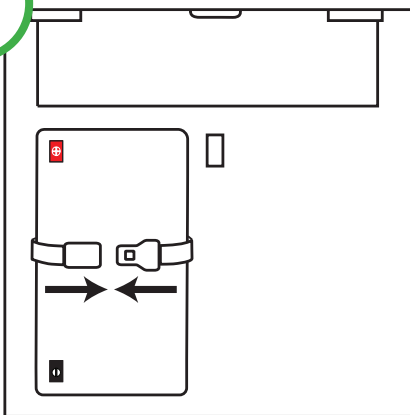


Red inverter wire - Red charger wire

+

Place lock washer, then flat washer, then red wires on bolt as show for red positive (+) battery connection

6



Clip nylon battery strap to secure battery

8



+

Insert bolt through red positive (+) battery terminal

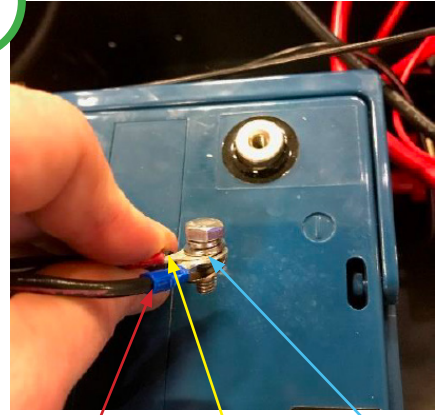


9



Tighten with any 10 mm wrench

11



Black inverter cable - black charger wire - black meter wire



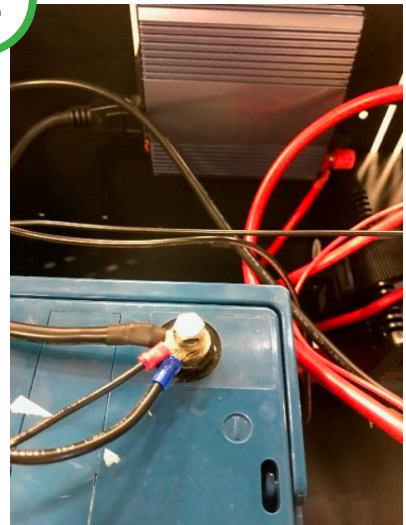
For black negative (-) battery connection, place lock washer, then flat washer, then wires on the battery bolt as shown

10

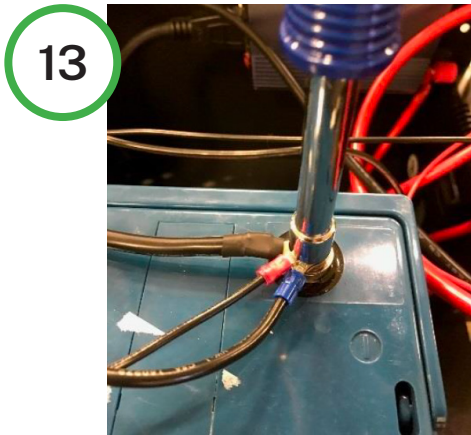


Pull red rubber boot over terminal

12



Insert bolt through black (-) battery terminal



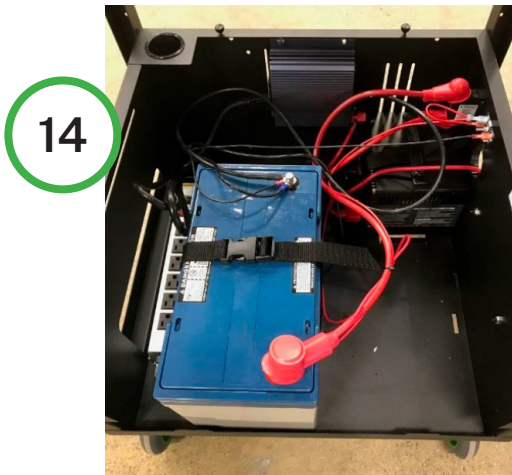
13

Tighten with any 10 mm wrench



16

Turn powerstrip on. Light should turn red.



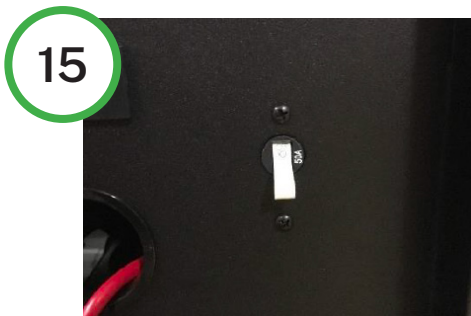
14

Make sure all fittings are tight and battery is strapped down in the cabinet. Test unit before placing battery cover on.



17

Place battery cover on and securely tighten thumb screws

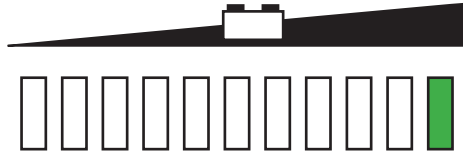


15

Turn on ( | ) the red inverter switch on blue inverter inside the battery cabinet.  
Turn on ( | ) white circuit breaker switch on right exterior of cart

## Tips for Proper Cart Operation

- Charge your battery before using it to ensure it is fully charged. Simply plug the charger cord (located on the side of the unit) into a standard wall outlet.
- Monitor the battery status meter on the cart.



Battery Light Meter Indicators

Voltage	11.2	11.4	11.5	11.7	11.8	12.0	12.1	12.3	12.4	12.6
Light #	1	2	3	4	5	6	7	8	9	10
Color	Red Blinks	Red Blinks	Yellow	Yellow	Yellow	Green	Green	Green	Green	Green

- Batteries should not be discharged below 11.5 volts because this will shorten the life of the battery.
- Batteries **should not** be stored in a discharged state for more than 1 or 2 days. They should be charged as soon as possible after each use (otherwise it will void the warranty). If a battery is left in a discharged state for a period of time, it may no longer take a charge.
- Avoid exposing battery to heat, service life is shortened at ambient temperatures above 85F.
- When powering equipment on the cart, it's okay to have the charger plugged in if necessary. In this case, the AC power will pass through the charger and power your equipment directly.
- When the cart is not in use, the system charger can be plugged into a wall outlet to ensure the battery remains in its optimal state. Turn the unit to the OFF position.
- **Be sure to charge your cart after every use. Simply plug the charger cord in to a wall outlet.**
- Charging system is a trickle charger, so leaving it plugged in will NOT damage the battery.

## A

Accessories [1](#)

## B

Battery [6](#)

Light Meter [6](#)

## C

Caution [v](#)

Contents, Standard [1](#)

Conventions [v](#)

Customer Service [v](#)

## D

Damaged Unit [v](#)

## L

Light Meter [6](#)

## S

Symbols [v](#)

## T

Technical Support [v](#)

Testing the Battery [6](#)

Tips for Proper Operation [6](#)

Tools Required [1](#)

## W

Warning [v](#)

# ASSEMBLY MANUAL



34 South Hunt Road  
Amesbury, MA 01913 / USA  
+1.781.935.3450  
[www.newcastlesys.com](http://www.newcastlesys.com)



**SAVE STEPS.  
INCREASE PRODUCTIVITY.™**